

FIGURE 1
LEFT HAND SIDE CASTING
not to scale

DRILL 2 x Ø0.8mm HOLES FOR STIRRUP STEPS USING THESE DIMENSIONS AS A GUIDE. TYPICAL TO ALL 4 CORNERS OF WAGON.

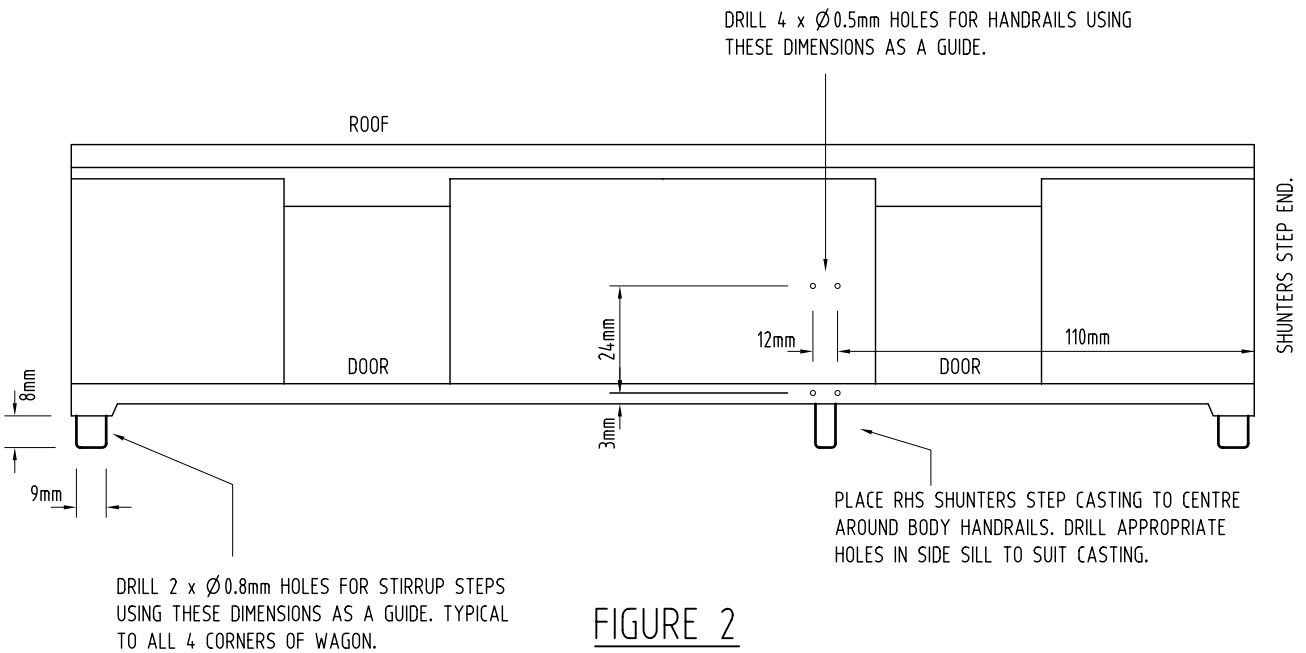


FIGURE 2
RIGHT HAND SIDE CASTING
not to scale

DRILL 2 x Ø0.8mm HOLES FOR STIRRUP STEPS USING THESE DIMENSIONS AS A GUIDE. TYPICAL TO ALL 4 CORNERS OF WAGON.