

DRILL 4 x $\varnothing 0.5\text{mm}$ HOLES FOR DOOR HANDLES IN DIMPLES PROVIDED.

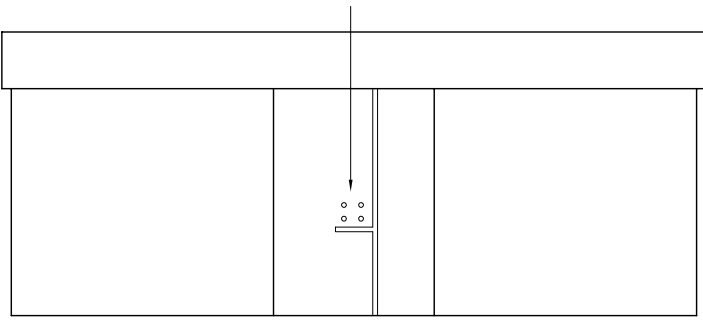


FIGURE 1

SIDE CASTING
not to scale

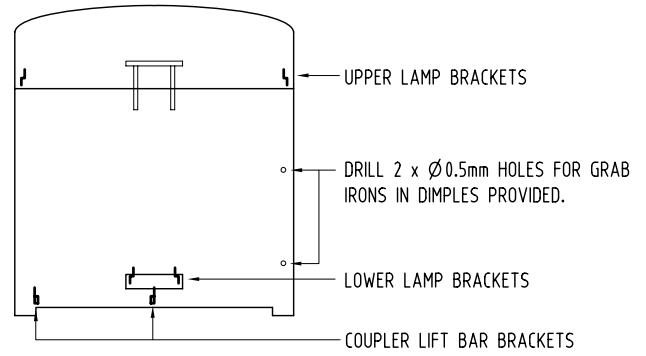


FIGURE 2

END CASTING
not to scale

DRILL 2 x $\varnothing 0.5\text{mm}$ HOLES FOR GRAB IRONS IN DIMPLES PROVIDED.

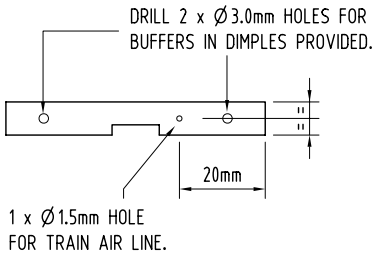


FIGURE 3

HEADSTOCK END OF FLOOR CASTING
not to scale

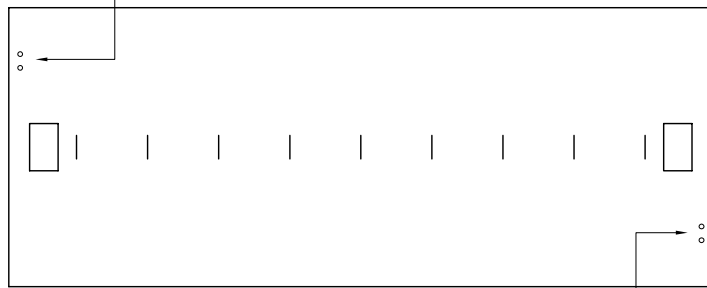


FIGURE 4

ROOF CASTING
not to scale

DRILL 2 x $\varnothing 0.5\text{mm}$ HOLES FOR GRAB IRONS IN DIMPLES PROVIDED.

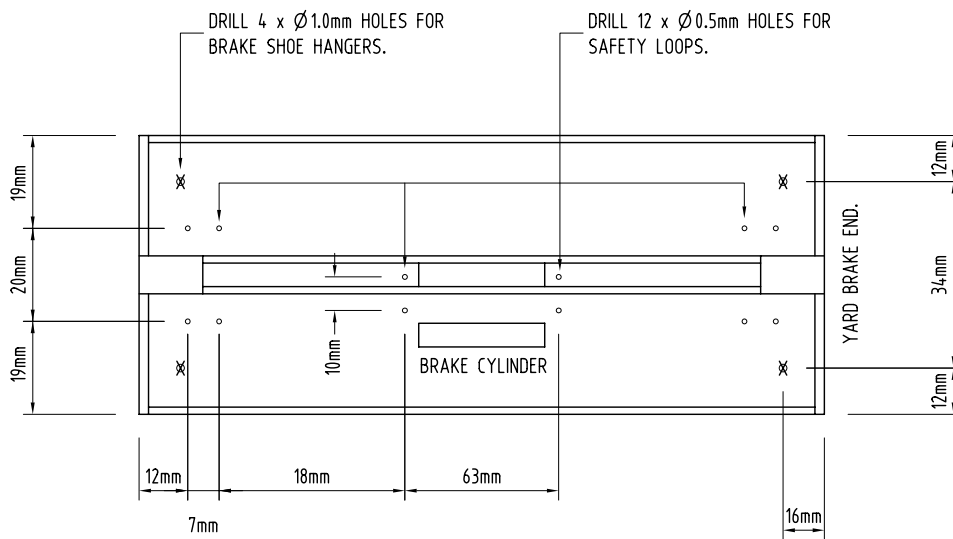


FIGURE 5

FLOOR CASTING
not to scale